

Next Wave is grateful to the Wurundjeri and Boon Wurrung peoples of the Kulin Nation on whose unceded country our festival takes place. We extend our deep respects to all Elders: past, present, and emerging.

For 60,000 years, generations of Kulin peoples have carried a cultural and creative continuum, intimately connected to the people, lands, and waters of so-called Melbourne.

It is with this spirit we gather to dance, talk, sing, write, share, and celebrate in this place that always was and always will be Aboriginal land.

A GOVERNMENT OF ARTISTS

MAY 15 — 31

**NEXT WAVE
FESTIVAL 2020**

@NEXT_WAVE #NWF2020 #GOVOFARTISTS

NEXTWAVE.ORG.AU

WELCOME

MESSAGE FROM THE MINISTER FOR CREATIVE INDUSTRIES

Next Wave is about more than just “what’s next?”

This Festival goes beyond this premise, to use art and performance to investigate what is next for our increasingly diverse community, our country, and our planet.

This year’s program features 28 new works by artists from across the country, alongside public programs and celebrations centred around the theme, ‘A Government of Artists’. It’s an opportunity to imagine what the world would look like if it were shaped by artists.

Art is about inclusiveness, freedom of expression and valuing a range of perspectives – the free production of art is a sign of a healthy democracy.

Like Next Wave, the Victorian Government is working to ensure that creativity is at the heart of our state’s future. We are proud to support this Festival as it continues to champion new voices and provide a platform for artists and audiences to experiment, ask questions, and explore new territory.

Enjoy 17 days of groundbreaking, risk-taking, inspiring art that Next Wave has to offer.

Martin Foley
Minister for Creative Industries

MESSAGE FROM THE LORD MAYOR

The City of Melbourne is proud to support Next Wave Festival 2020, which brings together our boldest and brightest creative talent.

From poets to performance-makers, curators to choreographers, Next Wave encourages our rising stars to address, investigate and respond to today’s most pressing issues.

This year, the Festival is set to showcase 28 new works by artists from across the country, along with parties, public programs, public interventions and more.

Melbourne is one of the world’s great creative cities and festivals like this play a vital role in creating new artistic work in our city.

Congratulations to the Next Wave team and the talented creatives, artists, thinkers and makers involved in this year’s event.

Sally Capp
Lord Mayor, City of Melbourne

MESSAGE FROM NEXT WAVE

In early 2019, Next Wave put out a national call for artists to form a Government. Responding to a divisive political ecology, major environmental destabilisation, growing economic inequality, and competing historical and cultural narratives, we invited artists to set the agenda for change.

We have devised and developed this program in collaboration with an inspiring and visionary cohort of Festival artists over twelve months. The conversations have been deep, critical, generous and illuminating. The Festival has emerged from these conversations as a collective demonstration, harnessing that amorphous and indefinable energy called art, to rethink how we can be together in this time and place.

Next Wave Festival 2020: A Government of Artists asks, ‘What is possible if we centre ourselves in a politics of hospitality and multiplicity? What can we achieve together?’ We invite you to join us for 17 days, to listen and participate in this critical, courageous and celebratory act. This is not governance as you know it.

Roslyn Helper
Director/CEO, Next Wave

AGENDA

02	Booking Information
04	Access
06	Sustainability
08	Warm Welcome
09	Brunswick Mechanics Institute
10	Crossword Club
11	Testing Grounds Takeover
12	Program
56	Map
58	Schedule
60	About Next Wave
62	Artist Index
64	Festival Supporters

BOOKING INFORMATION

The Next Wave Festival 2020 program includes ticketed performances, workshops, parties and programmed activities, free exhibitions, public artworks, workshops, artist talks, and moments of coming together.

HOW TO BOOK

You can buy tickets in the following ways:

ONLINE

nextwave.org.au

TELEPHONE

(03) 9329 9433

during business hours

VENUE

One hour prior to the event starting, unless sold out.

Unfortunately, many of our ticketed shows can and do sell out, so we encourage you to book in early. You'll need to register for free events online, which are subject to venue capacity.

Please remember, online ticket sales will end two hours prior to a performance start time, unless otherwise specified.

In an effort to be as paper-free as possible, Next Wave asks that you do not print tickets. Save time, paper, and ink, and simply turn up! Just bring photo ID to verify your identity.

BLAKTIX

Next Wave acknowledges that we live, work, and make art upon stolen land, and that sovereignty of so-called 'Australia' has not been ceded. We all profit from the colonisation of this land, and as part of our commitment to paying the rent, Next Wave is offering Blaktix across all ticketed events at Next Wave Festival 2020. Blaktix offers \$10 tickets for all First Nations Australians who wish to attend.



This symbol throughout the program and on our website indicates that the event offers Blaktix.

GREEN TICKETS

Next Wave offers Green Tickets to select events for a flat fee of \$20 per ticket, if you travel to a show in an environmentally friendly way. This could be by bicycle, walking, jogging, dancing, public transport, skateboard etc. Check out the Festival schedule to find events offering Green Tickets.



This symbol throughout the program and on our website indicates that the event offers Green Tickets to select shows.

PRICING AND REFUNDS

All events in the Next Wave Festival 2020 program are General Admission.

The advertised ticket price includes all booking fees, excluding any credit card or transaction fees that may apply when booking tickets online. These will depend on your payment method and bank. Please note that this might differ for partner providers and venues selling tickets to Next Wave Festival 2020 events.

Concession discounts apply to children aged 14 and under, full-time students, seniors, pensioners, Healthcare Card holders, and MEAA members. Next Wave also honours Companion Cards – see the Access page for details.

All ticket sales are final; unfortunately, we can't refund your ticket after it's been purchased.

The information contained in this guide is correct at time of design (February 2020). For the most up-to-date information, please visit nextwave.org.au.

Next Wave is committed to offering a range of access services so everyone can enjoy the Festival. We believe that disability is caused by a society and environment with physical, attitudinal, communication, and social barriers. It's our responsibility to create a festival that reduces these barriers to enable full participation by all people.

Next Wave adopts a range of initiatives that aim to reduce barriers and support our artists, venues and partners to deliver events that are accessible. We encourage you to call or email us if you have any questions about accessibility or would like to discuss your requirements with us.

FESTIVAL INFORMATION

Festival information can be found in alternative formats at nextwave.org.au, including:

- Large print PDF, RTF, and Word files of this program
- Plain English version of this program
- Audio Described version of this program
- Auslan video introduction
- Next Wave Festival 2020 Access Guide

If you would like to request information in another format please call us on (03) 9329 9422.

BOOKING TICKETS



To book your tickets, please call (03) 9329 9422 during office hours or email ticketing@nextwave.org.au and let us know about any access requirements you may have.

COMPANION & CARERS CARDS



Companion and Carer Card holders qualify for concession priced tickets. Companion Card holders also receive a complimentary ticket for their companion. To book, please call (03) 9329 9422 during office hours or email ticketing@nextwave.org.au.

The companion ticket must be booked at the same time as the purchased ticket.

NATIONAL RELAY SERVICE



We're Relay Service Friendly, and if you need you can contact us through the National Relay Service for no additional charge.

TTY USERS:

phone 13 36 77
then ask for (03) 9329 9422

SPEAK AND LISTEN USERS

phone 1300 555 727
then ask for (03) 9329 9422

INTERNET RELAY USERS

connect to the NRS
(internet-relay.nrscall.gov.au)
then type in (03) 9329 9422

ACCESS

ACCESS SYMBOLS

Look out for these symbols throughout this program and on our website, which indicate the accessibility of each event. More information about symbols and events can be found at nextwave.org.au.



Wheelchair access



Audio description



Tactile tour



Auslan interpreting



Audio Notes



Relaxed performance



Open captioning



No music or dialogue



Fully surtitled or minimal dialogue, some background music and/or sounds



Partly surtitled or includes dialogue, background music and/or sounds



This symbol indicates that audiences without a comprehensive understanding of the English language can engage with the event

SUSTAINABILITY

Amidst the climate crisis, it is more important than ever that we ensure eco-conscious decision-making is at the core of our activities. We know our Festival has direct and indirect impacts on the environment, and we're working hard, in alignment with our sustainability initiatives, to mitigate these effects. We're always looking to reduce our emissions, use our energy and water more efficiently, and implement sustainable working practices.

We continually aspire to operate responsively; striving to learn more, adapt and implement actions in a way that influences and empowers our community and minimises the

impact caused by our activities. We invite you to practice this too.

While engaging with Next Wave Festival 2020, there are tangible choices you can make to ensure you enjoy the events in an environmentally conscious manner. Please consider your carbon footprint when attending Festival events: don't print your ticket, bring a reusable water bottle, arrive on foot, by public transport, or by bicycle! Better still, purchase a Green Ticket to a show and get a discount just for travelling sustainably.

CONSIDER YOUR CARBON FOOTPRINT

WARM WELCOME

Next Wave Festival 2020 begins with a Welcome, led by Traditional Custodians, sharing their customs and stories that have served as the basis for Welcome ceremonies and collective gatherings on this land for thousands of years.

Warm Welcome is an invitation to arrive together. To listen, eat, observe, and share, guided by our first storytellers. Take a seat at our open dinner table and settle in for an evening that focuses on the ways, both old and new, that the First People of the land maintain a strong living culture.

Reflect, pay tribute and celebrate the place we meet, as we set our intentions for the coming weeks and witness the unfolding of A Government of Artists.

**BRUNSWICK
MECHANICS
INSTITUTE**

Fri 15 May
6pm

FREE



Warm Welcome is supported
by Moreland City Council

BRUNSWICK MECHANICS INSTITUTE

MAKE YOURSELF AT HOME.

Our door is wide open and we're inviting you to come over. Start early and stay up late, eat and dance, share and listen.

Brunswick Mechanics Institute is all about hospitality. We are rethinking what it means for you to be welcomed as a guest, to be comfy and to be cared for. Here, we play host for coming-togethers of all kinds.

Our throbbing heart is Big Esso – a pop-up kitchen created by Torres Strait owned and run café Mabu Mabu. Big

Esso in the language of the Meriam People of Mer Island means “biggest thank you”. Running throughout the Festival, they will be serving up delicious dishes celebrating Indigenous ingredients that have been used for over 60,000 years.

Join us Friday nights for a chat over a meal with some of our Festival artists. Wake up on Saturday morning with a special Festival-edition crossword and a filter coffee, then hang around for an afternoon cooking class. Stay with us into the night or drop in after a show to partyyyy.

**Keep your eyes on
nextwave.org.au for more info.**

CROSSWORD CLUB

“...a primitive sort of mental exercise.”

—NEW YORK TIMES, 1924

“Just as dogs love to chew bones, the mind loves to get its teeth into problems. That’s why it does crossword puzzles and builds atom bombs.”

—ECKHART TOLLE

“Never leave a crossword unfinished.”

—GO-STAR

“I’m weirdly attracted to... people in aprons, and people doing crosswords.”

—ANONYMOUS, HINGE

“Fighting with him was like trying to solve a crossword and realizing there’s no right answer.”

—TAYLOR SWIFT

“Brunswick Mechanics Institute will be open for coffee and crosswords, every Saturday morning of Next Wave Festival 2020. Come join us!”

—TOO EAGER FOR DETAIL, COPYWRITER AT NEXT WAVE

“I’m not really into crosswords, but I really like donuts with my coffee.”

—ALL DAY DONUTS, PURVEYOR OF SATURDAY MORNING SNACKS

**BRUNSWICK
MECHANICS
INSTITUTE**

Sat 16, 23, 30 May
From a respectable 10am
FREE

Crossword Club is supported by Everyday Day Coffee, All Day Donuts and Moreland City Council

TESTING GROUNDS TAKEOVER

Testing Grounds is handing over the keys to Next Wave for a last hurrah, and we’re taking over all of its infrastructures. This is Testing Grounds reimagined, before the iconic site is absorbed by precinct development.

Responding to the gradual collapse of structures and environments, we have put together a series of interventions,

workshops, and public forums that will challenge the physical and conceptual monument — the Melbourne Arts Precinct. It’s a Southbank operation, a collective artistic act to interfere with the Precinct, its stakeholders, routines, and economies. A program of exhibitions, performances, and interventions to test the limits.

Keep your eyes on nextwave.org.au for more info.

To go forward softly and very gently NEW WAYFINDERS (VIC)

C3 CONTEMPORARY ART SPACE, ABBOTSFORD CONVENT

Wed 13 – Sun 7 Jun
10am – 5pm

Opening
Sat 16 May 7pm

FREE

Auslan interpreted
artist talk talk
Sat 30 May 3pm



To go forward softly and very gently is supported by Hyphenated Projects and the Victorian Government through the Multicultural Festivals & Events Program.



What if our Government slowed down and contemplated the severity of it's actions?

New Wayfinders present an exhibition that investigates gentle resistance and slow governance with new artworks by Yasbelle Kerkow, Vicki Kinai, Florence Tupuola, and Peter Lemalu, all responding to the Samoan concept of *Fai fai lemu* (*Go forward softly and very gently*). Honouring oratory forms of artistic practice, New Wayfinders draw attention to the quiet details we often miss, the softness between

bold statements that support structures of knowledge and power.

Take a deep breath and move gently. Through a different lens of time and productivity, this multidisciplinary project reminds us of the vital role of artists and orators in building knowledge. It reminds us that artists have great integrity and responsibility in the age of polarised politics. Reclaiming the past and inhabiting the present, *To go forward softly and very gently* creates a space to listen, meet, weave, and contemplate.

Possession MARCUS WHALE (NSW)

A Next Wave x Liquid Architecture with Arts House co-commission
Presented by Arts House

ARTS HOUSE

Thu 28 – Sat 30 May
7.30pm

Opening Wed
27 May 7.30pm

\$25 / \$15 / \$10



Desire is a form of possession, commanding the body from within. Do we resist its embrace, or allow it to compel us wherever it must? Drawing on horror film tropes of the monster queer, this electronic opera-for-one is a magical summoning – a longing for communion with the invisible, where the performer's body moves, and is moved by, sound.

Possession celebrates the high drama and craft of opera via a solo performer inhabited by forces beyond human control. Aural feedback manifests physically and

disembodied sounds hum, howl, and screech. An unseen force slowly takes charge of the body. As this soundscape of haunted vibrations expands, a grotesque dance of hunger and transformation unfolds.

Possession is a compelling glimpse of the unimaginable; macabre and triumphant at once. It brings together the diverse talents of multi-disciplinary artists Marcus Whale, Justin Shoulder and Matt Adey to conjure a theatrical vision of erotic desire with the power to change both body and mind.

Possession is supported by the Robert Salzer Foundation and the City of Melbourne through Arts House.



ORA | mate BLACK BIRDS (NSW)

**A Next Wave x PACT
co-commission**

**Presented by
Darebin Arts
Speakeasy**

**NORTHCOTE TOWN
HALL, STUDIO ONE**

Tue 26 – Sat 30 May
8pm

Opening
Wed 27 May 8pm

Tue 26 May
8pm

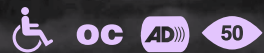
Sun 31 May
6pm

\$28 / \$23 / \$20 / \$10

Audio description
Sun 31 May 6pm

Full captioned performance
Thu 28 May 8pm

*Video elements of the show
are captioned*



ORA | mate is supported by City of Darebin through Darebin Arts Speakeasy and was originally developed through High/Way 234 program with support of PACT, PYT/ Fairfield and O Theatre Company (The Joan Sutherland Performing Arts Centre).

Ora = life, mate = death.

In 1886, Aotearoa's Mount Tarawera erupted. Indigenous understandings take the eruption as punishment for the exploitation of the mountain for tourist trade. 134 years later, it's still being exploited as a tourist destination.

In this intercultural and interdisciplinary theatre work, Black Birds explore how Indigenous and non-Indigenous knowledge systems

can co-function to understand, predict, and prevent looming large-scale environmental disasters.

Using theatre, poetry, dance, video, and music to story-tell, *ORA | mate* travels through time and language to challenge the dichotomy of nature and the human race. It asks us to think of ourselves as with and of nature, instead of dominant over it. How can modern science and ancient knowledges collaborate in a world calling to be healed?

deadstream_DABILBUNG (brokenwater)

LIBBY HARWARD (NGUGI OF QUANDAMOOKA) (OLD)

A Next Wave x
Bleached Arts
co-commission

C3 CONTEMPORARY
ART SPACE,
ABBOTSFORD CONVENT

Wed 13 May – Sun 7 Jun

Opening
Sat 16 May 7pm

Wed – Sun
10am – 5pm

Auslan interpreted artist talk
Sat 30 May 3pm

Captioned version of the work
will play intermittently

FREE



Water is our lifeblood. First Nations people of this country have held cultural responsibilities sustaining our waterways since time immemorial. Yet after just 230 years of colonial mismanagement, ancient river systems are in grief; over-extracted, commodified, depleted, and disrespected. Our rivers are being bled out.

deadstream_DABILBUNG is an immersive installation centering the issues facing fresh and saltwater country and culture.

This work commences from Harward’s ancestral country, in the

Quandamooka, listening to freshwater stories. Broadening its listening, it travels the ecosystems of the Bidgee and the Barka (Murray-Darling Basin), connecting with Traditional Custodians, hearing the call of hungry rivers, and exposing the forces that starve and choke them.

deadstream_DABILBUNG amplifies decades of lobbying from Aboriginal Custodians to return to the traditional governance of our waterways. The environmental, social, economic, and cultural rights around water are not being taken seriously – now is the time to listen and take action.



deadstream_DABILBUNG (brokenwater) is supported by the Australian Government through the Australia Council, its arts funding and advisory body, the Queensland Government through Arts Queensland and The Regional Arts Development Fund, a partnership between the Queensland Government and City of Gold Coast to support local arts and culture in regional Queensland.

Influence Operation MAKE OR BREAK (NSW)



SITeworks,
COMMUNITY ROOM 1
(GROUND FLOOR)

Fri 15 – Sun 31 May

FREE



Influence Operation is supported by the Australian Government through the Australia Council, its arts funding and advisory body, and the City of Melbourne Arts Grants Program, and Campbelltown Arts Centre.

What news stories aren’t you hearing, and why? With interference in global elections, powerful corporate agendas, data theft, voter manipulation, and an increasing lack of transparency in government, is it possible for citizens to take back power?

Over two weeks, Make or Break invites you to help influence the 24-hour news cycle in real time. Working alongside journalists, media analysts, and civic hackers, you will learn subversive media strategies, build bots and click farms, and redirect online traffic to

become the best Angelina-Jolie-in-Hackers-style citizen you can be.

Join the operation during daily workshops, see your content broadcast across town, and take power back from invisible influence. With *Influence Operation*, you set the agenda.

This project also includes group discussions and strategy sessions at multiple sites across Melbourne.

Check nextwave.org.au and [@make.or.break](https://www.instagram.com/make.or.break) on Instagram for more info.

In Perpetuity

IVEY WAWN (NSW)

A Next Wave and
Arts House co-
commission
Presented by
Arts House



ARTS HOUSE

Wed 20 – Sat 23 May
7.30pm

Opening
Wed 20 May 7.30pm

\$25 / \$15 / \$10

Audio file of essays available

**Tactile tour and movement
demonstration**
Sat 23 May 6.30pm

Audio described performance
Sat 23 May 7.30pm



In Perpetuity is supported by the Australian Government through the Australia Council, its arts and funding and advisory body, Chunky Move, Performance Space, Critical Path, Casula Powerhouse Arts Centre, Lucy Guerin Inc, and the City of Melbourne through Arts House.

We are the living dead. For most of our lives our meaning is stripped down to the profitability of our bodies. Just as a dressage horse is rewarded for its performance, we are rewarded with a wage. How can we strive to be anything more, when the value of our existence is reduced to its labour potential?

Choreographer Ivey Wawn asks us to find magic in the spaces between us. A gathering, an embrace, a song: *In Perpetuity* diagnoses the dire condition in

which we find ourselves today before embarking on a radical experimental plan of action.

Alternately mournful, sensual and violent, *In Perpetuity* uses dance, music, scent, and language to question our relationships to capital, to history, and to each other. It is not an escape, but an exploration of where and how we might maintain something like magic in the face of the abstracting forces that will us toward this state of living death.

Milk & Honey & Lemons

MOREBLESSING MATURURE (NSW)

A Next Wave x
Campbelltown
Arts Centre
co-commission
Presented in
association with
Hyphenated
Projects

HYPHENATED PROJECTS

Thu 28 – Sun 31 May
7pm

Opening
Wed 27 May 7pm

**Auslan interpreted
performance**
Fri 19 May

\$28 / \$23 / \$10



Milk & Honey & Lemons takes us into a residential home nestled in the Western suburbs of Melbourne, where the scents of Grandma's recipes spill into arguments over home country politics, drowning out the new-gen's new-age sounds. A picture of modern migration, *Milk & Honey & Lemons* asks us to reckon with the art of survival practiced on our street corners, school yards, and in our minds. All through the lens of a boy. In a hoodie. Of African appearance.

From a boy to nineteen, being grown is pretty full on. It means

a lotta things, top of the list: graduating from goon to \$7 red wine. This cocktail of naïvety and wisdom from Boy, who's seen it all, invites us in with one breath and with the next, shuts us out.

Throughout history, we've witnessed the Black body repeatedly denied autonomy in the narrative of its existence. What does it mean to come of age when the world has been taught to fear what you're becoming? In this one-man show, this question leaps out from the theoretical into the lived.

Milk & Honey & Lemons is supported by Sydney Theatre Company and the Victorian Government through the Multicultural Festivals & Events Program.



Beast of Burden of Proof ALEX LAST (TAS)



These are trialing times. Ecosystems are collapsing and whole species are rapidly disappearing. But who is responsible? One threat in particular has been singled out: a small bird known as the Indian or Common Myna. Introduced to this continent over 150 years ago, the species stands accused of rampant ecological lawlessness; of wreaking havoc on native birds, overcrowding available habitats, and interfering with human infrastructure. In response,

Myna communities are being exterminated across the country. However, until this moment, they have not received a fair trial.

Join your fellow citizens in this trial of restorative ecological justice, and confront a tangled, multi-sensory web of evidence in an effort to decide the Myna's fate – a decision laced with irreversible consequences. Participants must judge the facts and deliberate together, facing the ethics of being human in a world striving for ecological justice.

BRUNSWICK COUNCIL CHAMBERS

Thu 21 – Sun 31 May

Thu 21 May
6.30pm

Opening
Fri 22 May 6.30pm

Sat 23 – Sun 24 May
3pm & 6.30pm

Thu 28 – Fri 29 May
6.30pm

Sat 30 – Sun 31 May
3pm & 6.30pm

\$28 / \$23 / \$10

Auslan interpreted
performance
Thu 28 May 6.30pm

This work has open captions



Presented in association with the Chinese Museum

CONTEMPORARY ART SPACE, CHINESE MUSEUM

Thu 14 – Sat 20 May

Thu 14 – Fri 15 May
8pm

Opening
Sat 16 May 8pm

Sun 17 May
7pm

Wed 20 – Fri 22 May
8pm

Sat 23 May
2pm & 8pm

Sun 24 May
7pm (with Q&A)

Wed 27 – Fri 29 May
8pm

Sat 30 May
2pm & 8pm

\$28 / \$23 / \$10

Auslan interpreted
performances
Sat 23 May 2pm & 8pm



Poona is supported by the Australian Government through the Australia Council, its arts funding and advisory body, and the City of Melbourne Arts Grants Program.

Poona ROSHELLE FONG & KEZIAH WARNER (VIC)

Welcome to the Republic of Australia, 2050. The country is witnessing one of the tightest presidential runs in history, with one-time underdog, independent party candidate Poona Li Hung, now an unlikely frontrunner.

In 1997, the controversial book, *Pauline Hanson: The Truth* imagined Australia in the year 2050, run by Poona, a “lesbian... of Indian and Chinese background” and... a cyborg. Multidisciplinary

artist Roshelle Fong and playwright Keziah Warner bring Poona to life in this necessary and timely immersive theatre work.

As a Poona campaign staffer on election night, it's time to help your candidate prepare for the result, whichever way it goes. Fasten your 'Vote Poona' badge, collect that last-minute polling data, and brace yourself – will Australia's new President be the hero we've all been waiting for?



**BRUNSWICK MECHANICS
INSTITUTE, THEATRE**

Tues 19 – Sat 23 May
7.30pm

\$28 / \$23 / \$10

Audio description
Sat 23 May 7.30pm

Tactile Tour
Sat 23 May 6.30pm

*The entire season is suitable
for a Deaf audience with
social interpreters present
after performances*



Under My Tongue

BELINDA LOCKE (VIC)

Director Belinda Locke uses performance to unearth invisible challenges that people face in their lives every day. Drawing from anonymous submissions about real-life experiences, *Under My Tongue* delves into the politics of connection, the aesthetics of access, and the unseen aspects of people's identities, histories, and emotional lives. Two performers make the invisible visible with radical empathy, exposing vulnerabilities and desires.

Collaborating with dramaturg Julian Dibley-Hall and dancers Anna

Seymour and Joseph Stewart, personal and unseen moments are expressed through movement, vibrational sound design, and videography. Specifically designed to increase access for the artists and audiences, particularly those who are d/Deaf or hard of hearing, this work is brutally honest but fundamentally gentle, opening up conversation about fears, longing for connection and intimacy.

Image: Zan Winberley

Leisuretime I

AARON CLARINGBOLD & REBECCA MCCAULEY (VIC)

Leisuretime I is a photographic intervention inside an operating tourist ferry on the Birrarung/Yarra River. Jump on board to reflect on the ways that photography has shaped contemporary understandings and uses of ‘natural’ spaces within the floodplains now known as Melbourne.

Float along the river seated within a camera obscura, disembodied

from the outside world, and experience your surroundings reversed and upside-down, projected onto the vessel walls. Cruise with our guide as we take in some of the sights this city has to offer: riverside bars, outdoor BBQs, million-dollar properties, yoga in the park, and the oldest and largest surviving single dock in the world; asking, why did we get here, and how?

**BIRRARUNG/YARRA RIVER
MEET OUTSIDE MELBA
STAR, AT FEDERATION
WHARF, PRINCES WALK (IN
FRONT OF RIVERLAND)**

Sat 16 – Sat 23 May
Sat 16 – Sun 17 May
4.30pm
Tue 19 May
4.30pm
Fri 22 – Sat 23 May
4.30pm
\$28 / \$23 / \$10



Leisuretime I is supported by the Australian Government through the Australia Council, its arts funding and advisory body, City of Melbourne Arts Grants Program and RMIT through its Photo Futures Lab.



stock image from Homydesign, Dreamstime

The Revolution Will Not Be Aestheticised

WARRABA WEATHERALL (KAMILAROI) (QLD)



Image: Warraba Weatherall

**A Next Wave x
Metro Arts
co-commission**

**NO VACANCY
GALLERY**

Wed 20 – Sun 31 May
Opening
Thu 21 May 6-8pm
Tue – Fri
12pm – 6pm

Sat – Sun
12pm – 5pm

FREE

*Captioned versions of the work
will play intermittently*



The Revolution Will Not Be Aestheticised is supported by the Australian Government through the Australia Council, its arts funding and advisory body, and the Queensland Government through Arts Queensland.

How do we see the world around us when the dominant visual language is determined by colonial histories and capital?

In *The Revolution Will Not Be Aestheticised*, artist Warraba Weatherall draws on archival materials and systems of Australian politics, education, and media to demonstrate how racial stereotypes

are seeded in colonial doctrine and perpetuated by Western scientific knowledge systems.

Through video and sculpture, Weatherall thinks through conceptions of his own Kamilaroi heritage, and builds on an existing dialogue of contemporary cultural identity to make loud the silent violence of Australia’s visual cultures.

Below The Line

BEN BROOKER (SA)

A Next Wave x
Vitalstatistix
co-commission
Presented by
The SUBSTATION



Image: Orie Orléay

77 keyboard warriors, 4 days, 191 comments. Stripped of their anonymity, Australia’s loudest climate denialists are pitted against the eco-conscious in a fast, ferocious, and ultimately futile game of one-upmanship. Nothing much is at stake. Only the planet.

Drawing on the comments submitted to Kate Hennessy’s 2016 Guardian article about David Finnigan’s play, ‘Kill Climate Deniers’, *Below The Line* is a vital new theatre work exploring climate denialism, online comment culture, and our complicity in the unfolding catastrophe of climate change.

Over 75-minutes, five performers embody 77 online commenters as their irreconcilable worldviews

THE SUBSTATION

Tue 26 – Fri 29 May

Tue 26 – Thur 28 May
7.30pm

Wed 27 May
7.30pm

Fri 29 May
2pm & 7.30pm

\$28 / \$23 / \$20 / \$10

Auslan interpreted performance
Fri 29 May 2pm

Audio notes are available for download before the show. There is a breakout space available at the venue.



clash head on. Disconnected from each other, the world, and themselves, they have nowhere to go except their own ever-shrinking echo chambers. What emerges is a surreal, apocalyptic vision of a broken conversation playing out its death throes while the world burns.

Created by playwright and theatre-maker Ben Brooker in collaboration with designer Meg Wilson, choreographer Alison Currie, and dramaturg Bridget Mackey, *Below The Line* is a riveting indictment of how we talk about the climate emergency. As unprecedented fires rage across Australia, it asks: who gets to speak? Who do we listen to? And what happens when an overheated world revolts against us all?

Birrpai

NGIOKA BUNDA-HEATH (WAKKA WAKKA, NGUGI, BIRRPAL) (VIC)

Co-commissioned
with Chunky
Move as part of
Chunky Move+

Presented in
association with
Blak Dot Gallery

BLAK DOT GALLERY

Thu 14 – Sun 31 May

Opening
Sat 16 May 3-5pm

Thu – Sun
12–4pm

FREE

Performances

Sat 16 May
6pm (with Welcome to Country)

Sun 17 May
5pm

Wed 20 – Fri 22 May
7pm

\$28 / \$23 / \$10

Auslan interpreted performance
Thu 21 May 7pm



Birrpai is supported by the Victorian Government through Creative Victoria, Brunswick Mechanics Institute and the City of Moreland. Chunky Move+ is supported by the Besen Family Foundation.

How do you take representation back? Ngioka Bunda-Heath’s new dance project and photographic exhibition portrays colonial photography from a First Nations’ perspective. A follow-up to her 2019 work, *Blood Quantum*, interrogating her mother’s story, Birrpai now shifts the focus to her patrilineal heritage.

Birrpai draws parallels between the colonial gaze and today’s selfie culture, combining photography, movement, and storytelling. Bunda-Heath’s father, John Heath, is an Indigenous Historian whose research includes

the photographic work of non-Indigenous ‘culturist’ Thomas Dick. Dick, capturing “images of the dying race”, made members of the *Birrpai* community into museum curios through his series of staged photographs. Collected and archived in museums around the world, these images create chronologically false imageries of families, fabricated and fantasised based on Dick’s colonial imaginaries.

Birrpai reclaims these stories, switching the gaze and refocusing the lenses that have until now publicly framed the artist’s ancestors.



Image: James Henry

Below The Line is supported by MakeSpace, ActNow Theatre, and Slingsby Theatre Company.

Kaitiaki: Striking Lava

ISABELLA WHĀWHAI WARU (NGATI TUKOREHE,
TE ATI AWA TRIBAL AFFILIATION) (VIC)

FOOTSCRAY COMMUNITY ARTS
CENTRE, AMPHITHEATRE

Fri 22 – Sat 23 May
7pm

\$28 / \$23 / \$10

Auslan interpreted
Welcome to Country
Fri 22 May 7pm

*Dress weather appropriate as
the show is outdoors, bring pil-
lows/blankets if desired for com-
fort and warmth. This season will
involve relaxed elements
such as an optional quiet space,
ear plugs and 'come and go as
you please' policy*



Kaitiaki: Striking Lava is supported by
Maribyrnong City Council Community
Grant Program, Brunswick Mechanics
Institute, Lucy Guerin Inc and the Victorian
Government through the Multicultural
Festivals & Events Program.



Image: Irinipeli Waefin

How do we reform in the face of
relentless violation? When our
lands, our bodies, our languages,
and our communities are under fire?

Isabella Whāwhai Waru's, *Kaitiaki:
Striking Lava* is a new dance work
honouring Indigenous resilience and
vitality. The work responds to the
ongoing violation of Indigenous lands
and peoples with an incantation for
strength, tenderness, and protection,
channeling the forces of an evolving,
growing, grieving, and rising land
and community.

All across the world, Indigenous
bodies hold the frontlines while
under constant strain of persecution

and violence – from the desecration
of sacred lands and waters such as
Ihumatao and Pukeatua in Aotearoa,
birthing trees on Djab Wurrung
country, VIC, Mauna Kea, Hawai'i,
pipeline threats on Wet'suwet'en
lands, so-called Canada, the
burning of sacred lands across so-
called Australia, California and the
Amazon. Indigenous peoples are
the sovereign protectors, guides and
healers of their lands and peoples
around the world.

Kaitiaki: Striking Lava is an honouring
of Indigenous peoples. The earth
and her children. A mountain that
remakes itself. A land that heals itself
and returns stronger every time.

GREEN NASIM

NANA BILUŠ ABAFFY (VIC) & PARVIN SALJOUGHİ (IRAN)

Co-commissioned
with **Chunky
Move** as part of
Chunky Move+

Presented by
Chunky Move

CHUNKY MOVE, STUDIO 1

Sun 17 – 24 May

Preview
Sun 17 May 7pm

Opening
Tue 19 May 8pm

Wed 20–Sat 23 May
8pm

Sun 24 May
7pm

\$28 / \$23 / \$10

Auslan interpreted Q&A
Fri 22 May

Audio described
performance
Sun 24 May 7pm



GREEN NASIM is supported
by Arts House and the
City of Melbourne through
CultureLab, Centrale Fies and
workspacebrussels. Chunky
Move+ is supported by the
Besen Family Foundation.

GREEN NASIM is an experimental choreographic work about outsider art imaginaries, set inside a hijacked cinema screening a live as yet unfinished documentary about the coming animal revolution.

It is inspired in part by the strange story of Nasim Aghdam, a prolific YouTube video artist, Iranian immigrant, and animal rights activist who, in April 2018, took her

own life following a violent incident at the U.S. YouTube headquarters over censorship allegations.

Zagreb-born choreographer Nana Biluš Abaffy and Tehran-based artist Parvin Saljoughi dissect the sometimes-tragic disconnect between fantasy and cold reality, and deliberate on the meaning of freedom for an outsider alien artist.



White Line Fever

MATT AITKEN (WA) & LYNDON BLUE (VIC)



BRUNSWICK MECHANICS INSTITUTE, THEATRE

Tues 26 - Sat 30 May

Tue 26–Thu 28 May
7pm

Wed 27 May
2pm

\$28 / \$23 / \$20 / \$10

Special event
Sat 30 May 4.30pm

FREE

Auslan interpreted
performance
Wed 27 May 7pm



The crisp air on your face as you enter the stadium. The prickling of your skin as pre-game nerves settle in. The stirring of the sun-kissed day-drunk crowd. The intoxicating spell of the grandstand, jammed with screaming devotees. The coin toss, the white maggot's whistle, a set shot after the siren, the silence of anticipation.

White Line Fever is a series of training sessions for AFL supporters

of all creeds to embrace the deep energies of fandom and harness the “fire in the belly”. Artists Matt Aitken, Lyndon Blue, and the *White Line Fever* coaching team will usher you through the most magickal moments of recent footy history to relive the rituals and ecstasy of our national game. Expect devotional drills, rivalry rites, and whiteboard magnetism to purge toxic pigskin energies and lift long-held curses.



Livestream

KALANJAY DHIR (NSW)

**Presented in
association with
Bus Projects and
Composite**

**COMPOSITE & BUS PROJECTS
COLLINGWOOD YARDS**

Thu 14 – Sat 30 May

**VIDEO WORK VIEWED FROM
SIGNAL OUTDOOR SCREENS**

Fri 15 – Sun 31 May
6-10pm

FREE

*Captioned version of the work
will play intermittently*



In 2017, New Zealand’s Whanganui River gained legal rights. Could the river running through Australia’s most populous city eventually be afforded the same agency and respect?

Livestream is an exhibition that explores the lived and spiritual histories of the Parramatta River in Sydney’s Western suburbs, speculating on the potential for an authentic relationship between First Nations people and settler migrants, connected by intersecting relationships to land and water.

Swimming through a history of industrial and urban waste since colonial settlement, *Livestream* responds to the accelerated redevelopment of Parramatta and gentrification occurring in Australian cities. The project also surveys the role that migrants, particularly in Western Sydney, have had in shaping the riverbanks.

Drawing on his own cultural experience growing up by the River, Kalanjay Dhir uses video, performance, and sculpture to map a configuration of water systems as vast information sites to communicate with future societies.

Everyone Is Famous

RIOT STAGE

Presented by
Darebin Arts
Speakeasy

NORTHCOTE TOWN HALL,
STUDIO 1

Thu 14 — Sat 23 May

Preview
Thu 14 May 8pm

Opening
Fri 15 May 8pm

Sat 16 May
8pm

Sun 17 May
6pm

Tue 19 — Fri 22 May
8pm

Sat 23 May
2pm & 8pm

\$28 / \$23 / \$20 / \$10

**Auslan interpreted
performance**
Tue 19 May, 8pm

Relaxed performance
Sat 23 May 2pm



Everyone Is Famous is
supported by the Victorian
Government through Creative
Victoria, Darebin City Council
and Moreland City Council.



The internet is the Wild West. Persona in 2020 is post-ironic, post-truth, post and delete, pre-apocalypse and politically charged. It is freeing, it is constricting, it is gender-bending/breaking/ignoring. It is Kanye, it is catfishers, it is completely new, it is SIMS, it is Rachel Dolezal, it is Essena O'Neill, it is Trump, it is Fyre Festival, it is #hotgirlsummer, it is Miley, it is Kylie, it is filtered and honed. It is

up to you. It is an art. It is a career. It is breaking all the rules. It is more complicated than ever. In *Everyone Is Famous*, a group of teenagers pioneer this new uncertain territory on stage for you to witness with awe/shock/pleasure/horror/commiseration/empathy/lols. Image is not just attached to our bodies, it's in the cloud. We step away and look at it from a distance, save it, delete it, like it, boost it.

rruytina: above and below

NEIKA LEHMAN (TRAWLWOOLWAY)

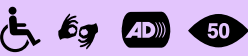
MISSION TO SEAFARERS,
NORLA DOME

Thu 21 — Sun 31 May
12pm — 5pm (closed Mon)

Opening
Thu 21 May 6pm — 8pm

FREE

Auslan interpreted artist talk
Sat 30 May, 2pm
Captioned version of the work
will play intermittently



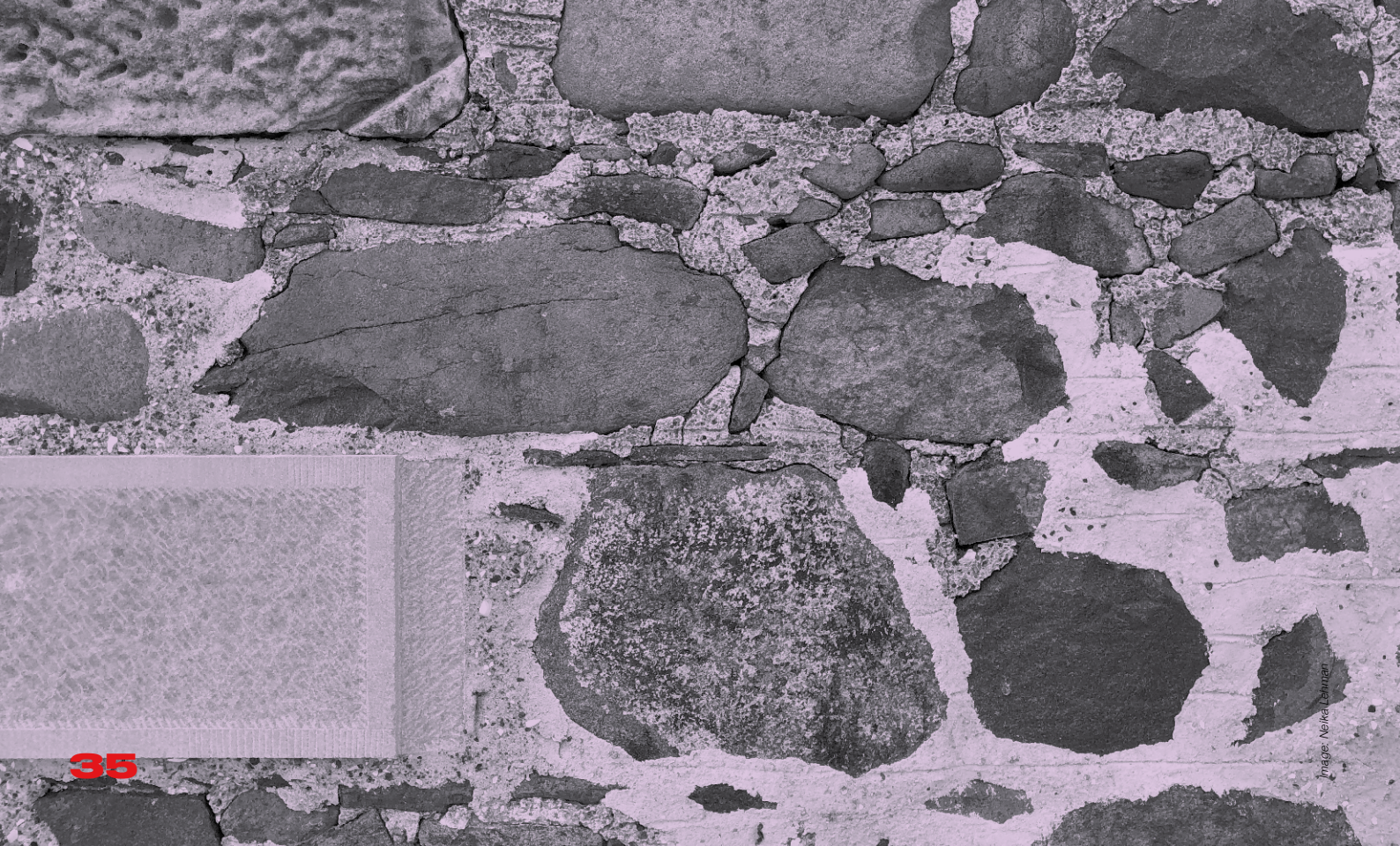
rruytina: above and below is
supported by the Victorian
Government through Creative
Victoria, and the City of
Melbourne Arts Grants Program.

In *rruytina: above and below*, artist Neika Lehman recovers and reconnects the stories buried at Australia's first offshore detention centre, paying tribute to the Aboriginal women buried there.

In 1832, the Government of Van Dieman's Land sent what they thought to be the last Aboriginal freedom fighters into exile at Wybalenna, Flinders Island. Marking the presumed end of Tasmania's Black War, Wybalenna settlement introduced a new set of struggles for justice for Tasmanian Aboriginal people. Wybalenna, now the site of a crumbling church, holds the unmarked graves of over one hundred Aboriginal people who never made it home.

A descendant of the Aboriginal activists portrayed in the 1992 documentary film, *Black Man's Houses*, Neika Lehman revisits the history and current conditions of Wybalenna settlement and works to repatriate the stories of six Aboriginal women across mainland Tasmania.

In this immersive film installation, multiple screens are positioned like portals, using Indigenous astronomy to navigate the viewer back to the sites of the stories. The exhibition meditates on the variant ecosystems that bear these women's stories, alongside the material conditions of current day Wybalenna. The films capture the site itself — the earth and rock, the church, and the sheep-bitten hills, alluding to what lies above and below.



Southern Ecophony

RACHEL MEYERS (TAS)

A Next Wave x
Liquid Architecture
co-commission

BRUNSWICK

Fri 15 – Sun 31 May
Self-guided, any time

Artist guided walk
Sat 16 – Sun 17 May 2pm

FREE

Entirely audio work, using
speakers or headphones
depending on the audience



Bring a pair of headphones and make your way through the busy streets of Brunswick, as an unearthly blend of overtones, field recordings, and original music composition pushes the boundaries of your listening. In this site-specific audio walking tour, artist and composer Rachel Meyers has taken inspiration from the ocean and its surrounds while deep in residency on the remote North West Tasmanian coast.

Listeners sculpt their own sonic experiences as they weave through streets and alleyways. *Southern Ecophony* invites participants to meditate on the intricate web of art, the world around us, and human perception.

Audio tracks feature field recordings of Rachel’s daily soundwalks, electroacoustic manipulations of aeolian violin recordings, and musical impressions of pneumonic sound sketches that the artist has drawn as part of her listening practice.

Active and attentive listening to our surroundings elucidates the mesh of human and non-human connections – an antidote to the exploitative economic and social systems that lie at the root of the crisis.

Visit nextwave.org.au/southernecophony to download the Echoes.xyz app after May 15.

Southern Ecophony is
supported by Arts Tasmania.

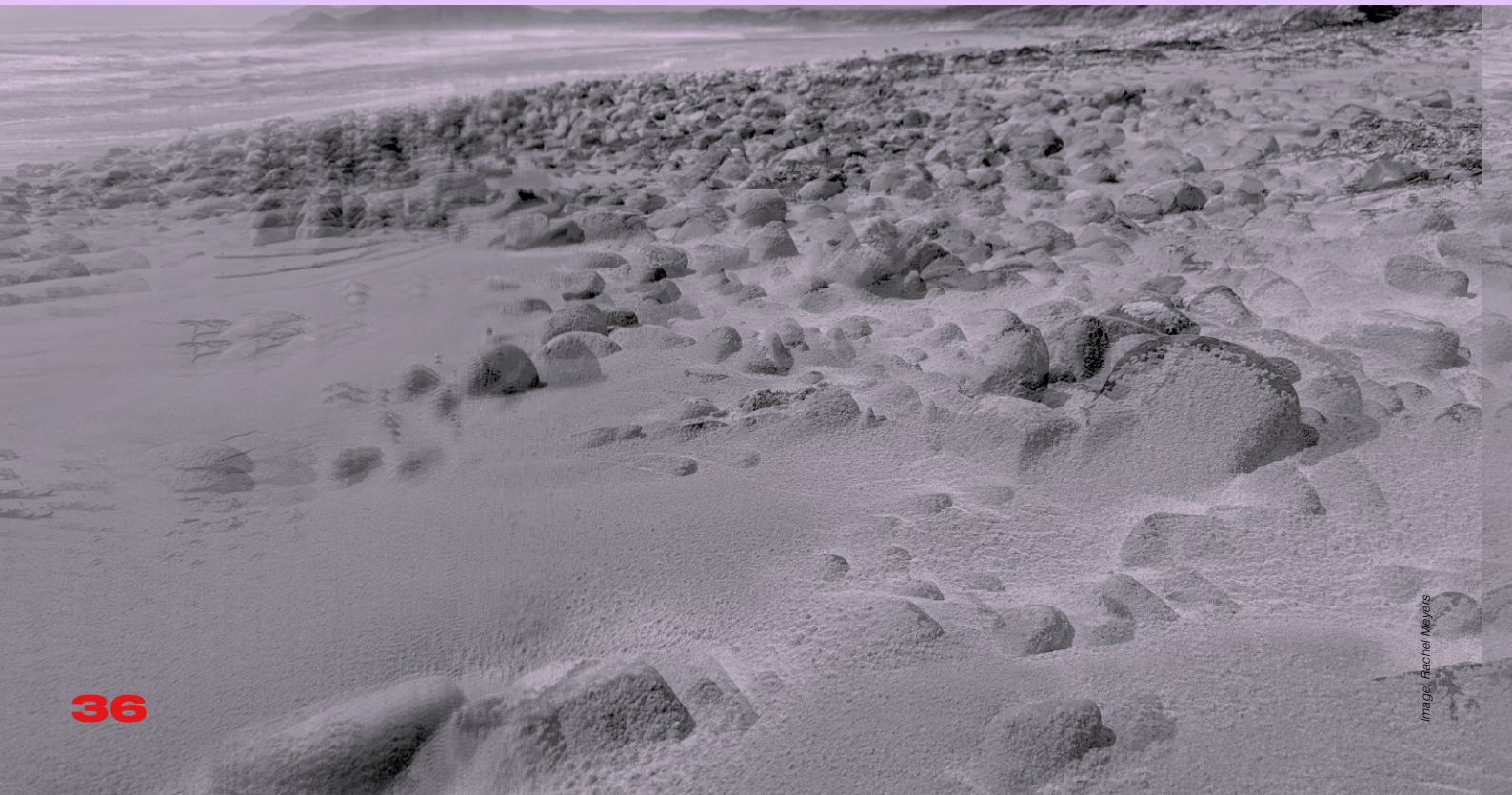


Image: Rachel Meyers

The Parallel Effect

DAZ CHANDLER (VIC/NSW)

A Next Wave x
Punctum
co-commission

Presented by
Darebin Arts
Speakeasy

NORTHCOTE TOWN HALL
ARTS CENTRE, MAIN HALL

Thu 14 – Sat 30 May

Opening
Fri 15 May 6pm

Tue – Fri
6pm & 7.30pm

Sat
4pm, 6pm & 7.30pm

\$28 / \$23 / \$20 / \$10

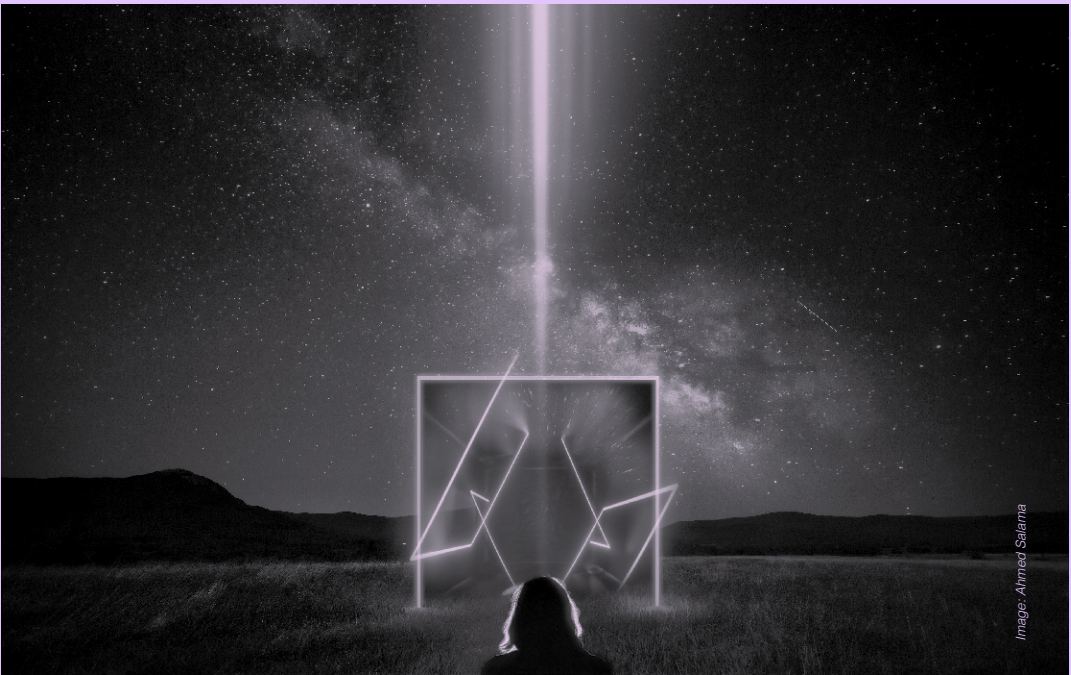


Image: Ahmed Salama

Dive through a wormhole to a parallel dimension where scientific, social, and political consensus on the Greenhouse Effect in the 1970s and 1980s was actioned globally, and many of today’s catastrophic realities of climate change were mitigated.

At the border of worlds is a museum of curiosities and artefacts: some shared in both dimensions, others marking alternatively climatic, political, institutional, natural, and social evolutions. Probe and imagine the commonalities and differences of ours and other parallel worlds; some overt, some forgotten and some nostalgic.

This experience is curated collaboratively and framed across media and discipline. Fusing together immersive theatre, creative optics, virtual and digital technologies, and artefacts both real and imagined, *The Parallel Effect* moves and decontaminates participants from the confines and pathologies of one world to another.

These other worlds lead to the pursuit of broader truths: the opportunity to reclaim and expand upon histories and realities of today, enabling us to rethink and imagine the unlimited possibilities of our own universe.

The Parallel Effect is
supported by the Graham
F. Smith Peace Foundation
and City of Darebin through
Darebin Arts Speakeasy.

Shifting Centre

NANETTE ORLY (NSW)

& ANDY BUTLER (VIC)

Co-commissioned
with West Space

TESTING GROUNDS

Fri 15 – Sun 31 May
10am – 4pm (closed Mon)

FREE



*Shifting Centre is supported
by Testing Grounds and the
Victorian Government through
the Multicultural Festivals and
Events program.*

The centre is shifting, peripheries are becoming prominent and we are experiencing a push to diversify discourses within our cultural institutions – to bring the outside into the centre. However, there are limitations and performative expectations placed on artists, writers, and curators working within this space.

In this process-driven exhibition, Nanette Orly and Andy Butler explore curatorial modes of collaboration, shared knowledge, and community building, working

to create space for artists to enact resistance, resilience, and artistic practice that pushes against the narrow limits of diversity discourse.

Creating a dialogue between Moorina Bonini, Sean Miles, Aida Azin and Shan Turner-Carroll, *Shifting Centre* marks the final project at Testing Grounds before the venue closes permanently, and pays tribute to a site that has supported experimental, artist-led practices against the backdrop of the Southbank's most 'centred' cultural institutions.

Coil

RE:GROUP PERFORMANCE COLLECTIVE (NSW/TAS)



Image: Carly Young

re:group performance collective have set themselves a new challenge: use just one performer. Cast members will be replaced with cameras, screens, and projections. Part monologue, part cinematography masterclass, *Coil* takes the audience on a journey through multiple interrelated narratives as one actor, picked at random from the re:group performance collective team each night, creates an ensemble of themselves to perform with.

Coil asks, “What happens when we task our technologies with the role of collaborator?”

Coil is supported by THE SUBSTATION, Merrigong Theatre Company, PACT Centre for Emerging Artists, Shopfront Arts Co-op, Back to Back Theatre and Creative Partnerships Australia through MATCH lab and is assisted through Arts Tasmania by the Minister for the Arts.

**Presented by
The SUBSTATION**

THE SUBSTATION

Wed 20 – Sat 23 May

Opening
Wed 20 May 7.30pm

Thu 21 – Fri 22 May
7.30pm

Sat 23 May
2pm & 7.30pm

\$28 / \$23 / \$20 / \$10

**Audio described
performance**
Fri 22 May 7.30pm

**Relaxed interpreted
performance**
Sat 23 May 7.30pm

**Auslan interpreted
performance**
Sat 23 May 7.30pm

*There is a breakout space
at the venue*



It blurs genre boundaries of science fiction, horror, thriller, and satire, in the spirit of *The Twilight Zone*, *Black Mirror*, and whatever James Dean’s new CGI role in that Vietnam War movie is going to be.

Meticulously designed as a human-powered Rube Goldberg machine, this 60-minute live cinema experience explores the viability of relationships as we age, the sustainability of collective arts practices in modern Australia, and the place of human labour in the face of the next phase of widespread automation.

Dead ends & detours

BRUNO BOOTH (WA)

**A Next Wave x
Perth Institute
of Contemporary
Arts (PICA)
co-commission in
partnership with
The University of
Melbourne, New
Student Precinct
Project**

How do you move through the world in a wheelchair when there’s an obstacle around every corner?

It can be ruff going in the ‘burbs when you use a wheelchair, barking dogs and rocky paths are constant (annoying) companions. In this large-scale participatory art installation, you will navigate your way in wheels through an array of sculptures and site-

specific interventions.

Grab a wheelchair and go! Can you get through that sand pit? Why won’t this gate open? Beat your mates, beat your best time, and take home the golden cushion.

Artist Bruno Booth responds to the University of Melbourne’s architecture and urban landscape with this daring and cheeky obstacle course.

THE UNIVERSITY OF MELBOURNE PARKVILLE CAMPUS

Sat 16 – Sun 31 May

Thu – Sun
12 – 3pm

*Inductions on
the hours*

FREE



*Dead ends & detours is
supported by Western
Australia Department of Local
Government, Sports and
Cultural Industries, Dulux and
Fremantle Arts Centre.*



Image: Laurence Williams

Filter My Prejudice

SAPNA CHANDU & MICHAEL WARNOCK **(VIC)**

VARIOUS SITES ACROSS
MELBOURNE

Fri 15 – Sun 31 May

FREE



Reminiscent of an anti-discrimination campaign, Sapna Chandu and Michael Warnock have rolled out interactive posters online and across Melbourne featuring vivid photographic scenes inspired by Bollywood melodrama. A sound work accompanies each poster and acts as a sonic portal for the audience to enter into.

This work highlights ways that cultural stereotyping and parenting practices inform our unconscious biases. Drawing on the vernaculars of meme culture, *Filter My Prejudice* calls attention to the ways in which we all contribute to the culture of discrimination, and offers audiences a chance to filter their prejudice.



Image: Michael Warnock

Counterbalance

EFREN PAMILACAN & LAY THE MYSTIC (VIC)

The loving relationship with our Governments have soured. They are partners that no longer meet our needs, no longer listening, being responsive or caring for us when we're sick.

Devised by lyrical poet, musician, and artist Lay the Mystic, and dance-maker Efren Pamilacan, *Counterbalance* is a choose-your-own-adventure night of music, hip hop, dance, spoken word, voguing, and roller skating. Working simultaneously, performers

use Testing Grounds to interpret different social and political conditions that reflect their need to be nourished.

Asking us to come together, to listen deeply, and raise our voices to form a coalition that speaks for us all, *Counterbalance* forms a living, roving Government that at times may lose its balance. Emotion over regulation, bodies over body corporates, a collectivism that restructures the way we govern.

TESTING GROUNDS

Thu 21 – Sat 23 May
7.30pm

Sun 24 May
5.30pm

\$28 / \$23 / \$10



Counterbalance is supported by Brimbank City Council through Bowery Theatre, Testing Grounds and the Victorian State Government through the Victorian Multicultural Commission.



RALLY

fine print magazine (SA)



A Next Wave x
ACE Open
co-commission

BRUNSWICK MECHANICS
INSTITUTE

Sun 31 May
2pm

FREE

This event is Auslan interpreted



RALLY is supported by the Australian Government through the Australia Council, its arts funding and advisory body and the Government of South Australia.

Closing the Festival, *RALLY* offers an afternoon of personal reflection, political critique, vibrant discussion, and emotional response to A Government of Artists. What has this Government achieved? Who has it served? What has been put in motion? What has it enabled us to hear, see, learn, and understand? What has it failed to do? And where to from here?

Online arts publication, fine print magazine invites practitioners Andy Butler, Ruth de Souza, Taree Sansbury, Thomas McCammon, Lay the Mystic, and Lisa Waup alongside other voices from the Next Wave

Festival 2020 cohort to respond to the Festival's artistic rationale. They will tease out linkages between language, care, sovereignty, and spirituality explored by Next Wave artists throughout the Festival.

Through the action of transcribing the written word into physical, performative, and sensory work, fine print's *RALLY* is an investigation into the politics of presentations and collective kinship. Whilst engaging with the themes of the Festival, this thoughtfully curated series of responses is concerned with the architecture of people and the multi-sensory act of transcription.



Image: James Henry

Ngioka Bunda-Heath
 Dancer / Choreographer / Animal Lover /
 Occasional Klutz / **Creative Victorian**

See Ngioka's dance and photography installation *Birrpai* at Next Wave 2020.

To find out how the Victorian Government is backing creative Victorians visit creative.vic.gov.au

CREATIVE VICTORIA



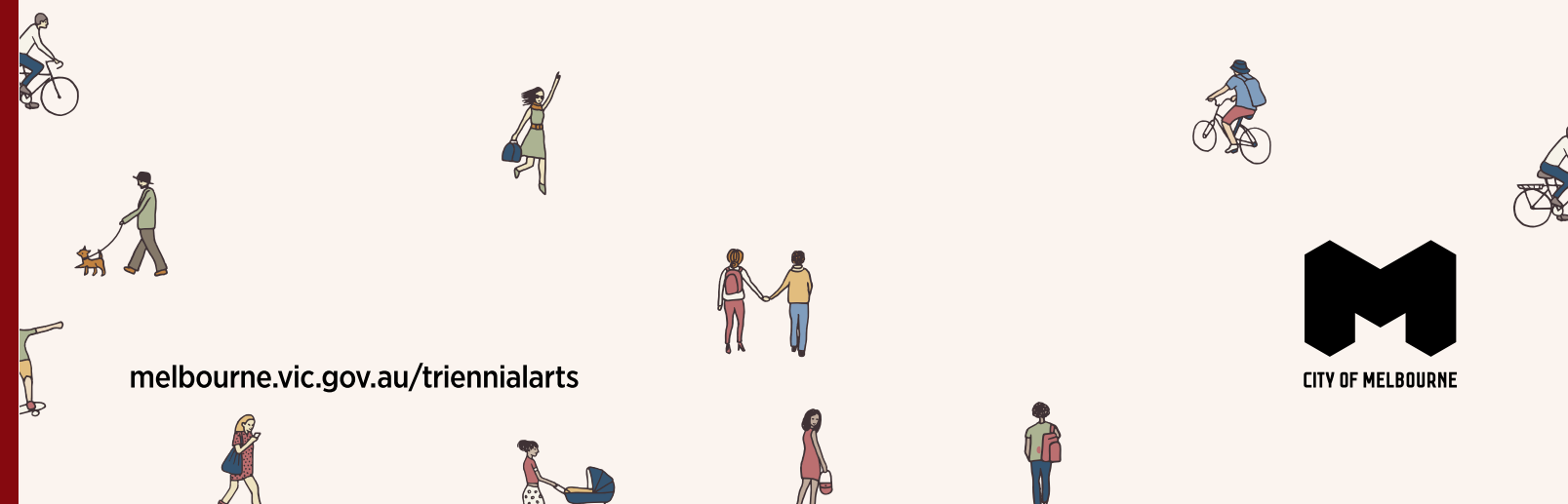
MELBOURNE IS A CREATIVE CITY

The City of Melbourne proudly supports major and emerging arts organisations through our 2018–20 Triennial Arts Grants Program

African Music and Cultural Festival
 Aphids
 Arts Access Victoria
 Australian Art Orchestra
 Australian Centre for Contemporary Art
 BLINDSIDE
 Chamber Made
 Circus Oz
 Craft Victoria
 Emerging Writers' Festival
 Human Rights Arts & Film Festival
 ILBIJERRI Theatre Company
 KINGS Artist-Run

Koorie Heritage Trust
 La Mama
 Liquid Architecture
 Lucy Guerin Inc.
 Malthouse Theatre
 Melbourne Fringe
 Melbourne International Arts Festival
 Melbourne International Comedy Festival
 Melbourne International Film Festival
 Melbourne International Jazz Festival
 Melbourne Queer Film Festival

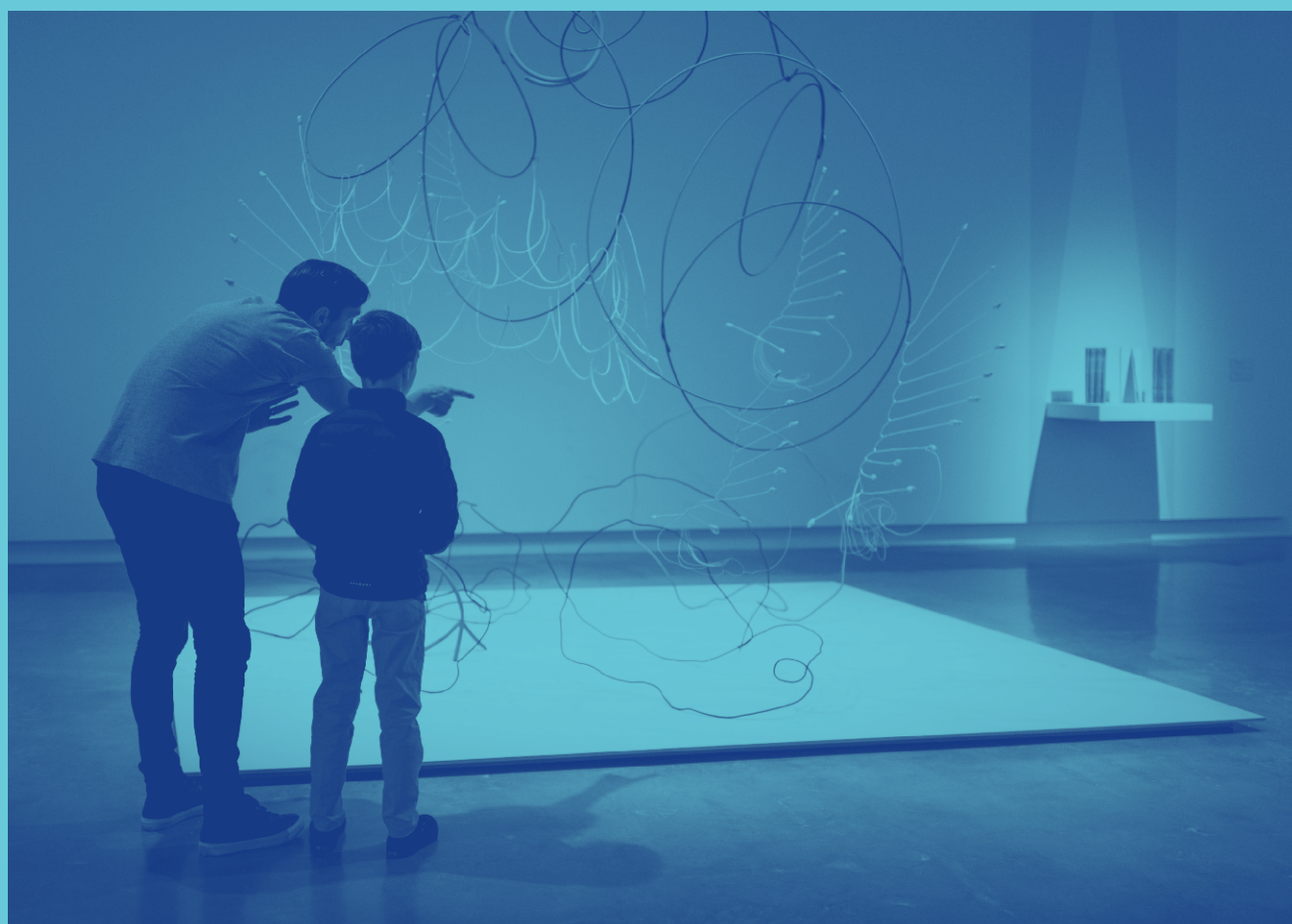
Melbourne Symphony Orchestra
 Melbourne Writers Festival
 Multicultural Arts Victoria
Next Wave Festival
 Polyglot Theatre
 Speak Percussion
 St Martins Youth Arts Centre
 Victorian Youth Symphony Orchestra
 West Space
 The Wheeler Centre
 Wild@Heart Community Arts



melbourne.vic.gov.au/triennialarts



Previews, features, interviews,
studio visits and the latest art news.
Your ultimate destination for
contemporary Australian art.



PHOTOGRAPH BY Jesse Marlow

PROUDLY EST. 2013

PROUDLY EST. 2013
FOUR PILLARS
SMALL AUSTRALIAN
DISTILLERY

INTERNATIONAL GIN PRODUCER OF THE YEAR 2019

Australia's leading craft
distillery, Four Pillars Gin,
has been named the best
gin maker in the world.
Cheers to world-leading
Australian creativity.



INTERNATIONAL WINE & SPIRITS COMPETITION (IWSC)

PLEASE DRINK RESPONSIBLY
DON'T DRINK MORE, DRINK BETTER.

NOISY RITUAL

URBAN WINERY

249 Lygon St Brunswick East · noisyritual.com.au



Your passport to navigating Melbourne's cultural gems...

Did you know that when you subscribe to Triple R, you not only join an inclusive community of ethically and culturally engaged people, you also have the opportunity to win stacks of prizes (including tickets to movies, gigs and more), attend near weekly Triple R subscriber events, and get access to discounts from loads of businesses around town? Yep, that's right – a Triple R subscription pretty much sets you up for a year of cultural goodness.

Triple R is a totally independent, not-for-profit community media organisation, which means that the voices and opinions you hear on the station are ones you don't usually hear elsewhere.

The station is run by around 800 volunteers, alongside a small team of paid staff. As for funding, that comes from sponsorship and the listeners themselves, who put their hand in their pocket to subscribe.

A subscription also gives you full access to our audio archives, free event promotion via rrr.org.au, plus you'll receive the tri-annual subscriber mag, *The Trip*, and the iconic 3RRR FM bumper sticker.

To listen to Triple R, simply head to 102.7FM on your radio dial, search for 3RRR on digital radio, download the RRR app, or stream via rrr.org.au – where you can also subscribe in a flash.

102.7 FM THREE TRIPLE RRR
rrr.org.au/subscribe

Proud
partners of
the 2020
Next Wave
Festival.

M.v.Moto.
EST.1985

PRINT & DISTRIBUTION | POSTERS & FLYERS | DIGITAL SCREEN NETWORK

www.mrmoto.com.au | (03) 9417 7008

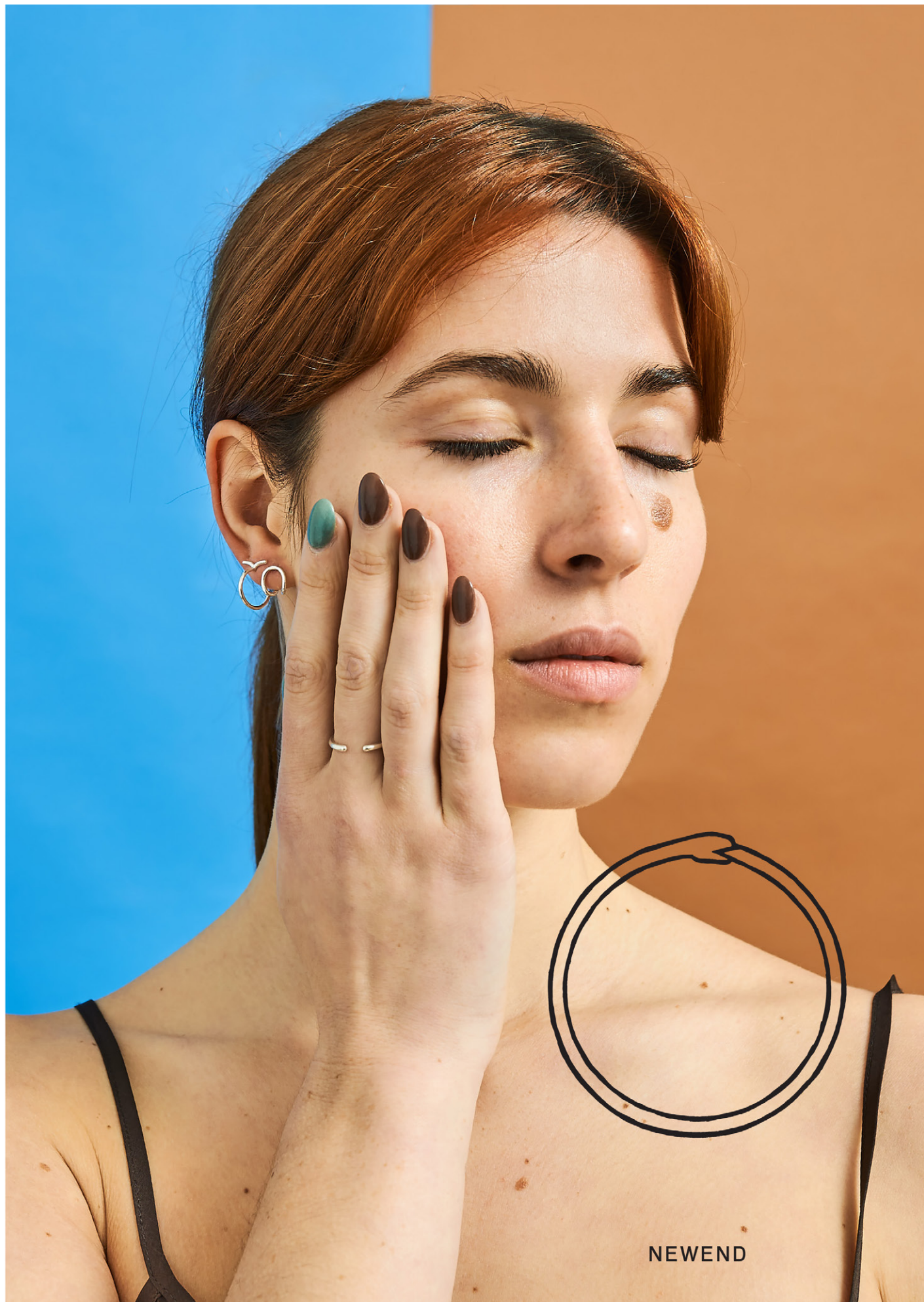
BRUNSWICK **MECHANICS INSTITUTE**

BRUNSWICKMECHANICS.COM

Flexible theatre and studio spaces
for hire year-round in the heart
of Brunswick. Managed by Next Wave
in partnership with Moreland City
Council.

Next Wave,





NEWEND



ART DIRECTION
BRANDING
PRINT DESIGN
DIGITAL DESIGN
ENVIRONMENTAL

Design partners of Next Wave Festival 2020.

hoursafter.com.au

FESTIVAL Map

- 01 **Arts House**
- 02 **Birrarung/Yarra River**
- 03 **Blak Dot Gallery**
- 04 **Brunswick Mechanics Institute**
- 05 **Chinese Museum Melbourne**
- 06 **Chunky Move**
- 07 **Composite**
- 08 **Footscray Community Arts Centre**
- 09 **Hyphenated Projects**
- 10 **Melbourne University**
- 11 **No Vacany Gallery**
- 12 **Norla Dome, Misson to Sefarers**
- 13 **Northcote Town Hall**
- 14 **Siteworks**
- 15 **Testing Grounds**
- 16 **The Substation**
- 17 **C3 Contemporary Arts Space**



Schedule

PROJECT TITLE	ARTIST	VENUE	PG	MAY	12	13	14	15	16	17	18	19	20	21	22	23	24	25	26	27	28	29	30	31
DEADSTREAM DABILBUNG (Broken Water)	Libby Harward	C3 Contemporary Art Space	16																					
To go forward softly and very gently	New Wayfinders	C3 Contemporary Art Space	12																					
Birrpai	Ngioka Bunda-Heath	Blak Dot	27																					
The Parallel Effect	Daz Chandler	Northcote Town Hall - Main Hall	37																					
Poona	Roshelle Fong & Keziah Warner	Chinese Museum	21																					
Everyone Is Famous	Riot Stage	Northcote Town Hall - Studio 1	34																					
Livestream	Kalanjay Dhir	Composite-CAP	33																					
Warm Welcome		Mechanic's Institute	8																					
Crossword Club		Mechanic's Institute	10																					
Shifting Centre	Nanette Orly & Andy Butler	Testing Grounds (All boxes)	39																					
Signs For Our Times	Tal Fitzpatrick	Testing Grounds																						
Dead ends & detours	Bruno Booth	Melbourne University Carlton	41																					
Leisuretime I	Rebecca McCauley & Aaron Claringbold	Yarra River	24																					
Southern Ecophony	Rachel Meyers	Mechanic's Institute	36																					
Filter My Prejudice	Sapna Chandu	Various	42																					
Dancing around the issues	Dancehouse x Next Wave	Dancehouse																						
Influence Operation	Make or Break	Siteworks	17																					
GREE NASIM	Nana Bilus Abaffy & Parvin Saljoughi	Chunky Move	30																					
Under My Tongue	Belinda Locke	Mechanic's Institute	23																					
The Revolution Will Not Be Aestheticised	Warraba Weatherall	No Vacancy	25																					
In Perpetuity	Ivey Wawn	Arts House	18																					
Coil	re:group performance collective	The SUBSTATION	40																					
rruytina: above and below	Neika Lehman	Mission To Seafarers	35																					
Beast of Burden of Proof	Alex Last	Brunswick Council Chambers	20																					
Counterbalance	Efren Pamilican & Lay The Mystic	Testing Grounds	44																					
Kaitiati: Striking Lava	Isabella Whāwhai Waru	Footscray Community Arts Centre	28																					
BMI Parties	Next Wave	Mechanic's Institute																						
White Line Fever	Matt Aitken & Lyndon Blue	Mechanic's Institute	31																					
Below The Line	Ben Brooker	The SUBSTATION	26																					
ORA I Mate	Black Birds	Northcote Town Hall - Studio 1	15																					
Milk & Honey & Lemons	Moreblessing Maturure	Hyphenated Projects	19																					
Possession	Marcus Whale	Arts House	13																					
RALLY	fine print magazine	Mechanic's Institute																						

This schedule is current at time of design in February 2020. Refer to the website for up to date version.

Next Wave

Next Wave is the most comprehensive platform in Australia for a new generation of artists taking creative risks. Next Wave delivers Kickstart, a nationally focused, artistic and professional development program, and major presentation opportunities through our biennial Festival and national partnerships program Next Wave X.

Next Wave also operates the Brunswick Mechanics Institute, a centre for experimental performance and artist-led learning, which enables us to support artists in the development and presentation of experimental work year-round.

Next Wave is a values-driven organisation and industry leader, advocating for cultural inclusion, broad accessibility, and best practice in environmental sustainability, with deep respect for the traditional custodians of the lands and waters that sustain us, Aboriginal and Torres Strait Islander people.

DIRECTOR/CEO

Roslyn Helper

GENERAL MANAGER

Priya Pavri

SENIOR PRODUCER

Bron Belcher

BUSINESS & OPERATIONS MANAGER

Sullivan Patten

PROGRAMS & OPERATIONS MANAGER, BRUNSWICK MECHANICS INSTITUTE

Jacqueline Hanlin

MARKETING & COMMUNICATIONS MANAGER

Brigitte Trobbiani

ASSOCIATE PRODUCER (PARTNERSHIPS)

Anita Spooner

ADMINISTRATION & OPERATIONS COORDINATOR

Magenta Sheridan

ASSOCIATE PRODUCER

Emily Sweeney

ASSOCIATE PRODUCER

Nikki Lam

ASSOCIATE PRODUCER

Alec Reade

ASSISTANT PRODUCER (BRUNSWICK MECHANICS INSTITUTE)

Kalyani Mumtaz

MARKETING & ENGAGEMENT COORDINATOR

Lujayn Hourani

ENGAGEMENT COORDINATOR (FIRST NATIONS)

Moorina Bonini

PRODUCTION MANAGER

Bart Mangan

TICKETING COORDINATOR

Jackson Coe

NEXT WAVE INTERN

Rosie Leverton

RISK MANAGEMENT

FIRST IN LAST OUT

Emily O'Brien

PUBLICITY

Prue Bassett Publicity

DESIGN

Hours After

WEB DEVELOPMENT

Fine Thought

BOARD

Vanessa Pigrum, Chair

Hinda Crosbie, Treasurer

Isthar Vij, Public Officer

Steven Rhall

Kristy Ayre

Stephen Armstrong

Lesley Gillan

Nicole Smith

NEXT WAVE FESTIVAL 2020 POLICY MAKERS

**Aaron
Claringbold
& Rebecca
McCauley**

Alex Last

Belinda Locke

Ben Brooker

Black Birds

Bruno Booth

Daz Chandler

**Efren Pamilacan
& Lay the Mystic**

**fine print
magazine**

**Isabella
Whāwhai Waru**

Ivey Wawn

Kalanjay Dhir

Libby Harward

Make or Break

Marcus Whale

**Matt Aitken &
Lyndon Blue**

**Moreblessing
Maturure**

**Nana Biluš
Abaffy &
Parvin Saljoughi**

**Nanette Orly &
Andy Butler**

Neika Lehman

New Wayfinders

**Ngioka
Bunda-Heath**

Rachel Meyers

**re:group
performance
collective**

Riot Stage

**Roshelle Fong &
Keziah Warner**

**Sapna Chandu
& Michael
Warnock**

**Warraba
Weatherall**

Celeste Aldahn

Rosie Leverton

Morgan Little

Joshua Allen

FESTIVAL SUPPORTERS

GOVERNMENT PARTNERS



NEXT WAVE X PARTNERS



Bleach*



PROGRAM PARTNERS



RADIO PARTNER



FESTIVAL PARTNERS



ACCESS PARTNERS



PRINCIPAL PUBLIC SUPPORTER

PROJECT PARTNERS



NEXT WAVE X PARTNERS



PROGRAM PARTNERS



MEDIA PLAYER PARTNER

HOSPITALITY PARTNERS



**WHERE THE
POTENTIAL
BECOMES THE
POSSIBLE**

@NEXT_WAVE #NWF2020 #GOVOFARTISTS

NEXTWAVE.ORG.AU